



Specification

Rate
Adjustable
Max (LB4): 400 Nm/rad/s
(3500 lbf.ins/rad/s)

Angle of travel
240° ± 5°
External end stops must be provided

Max. safe torque
1400 lbf.ins / 160 Nm
Continuous power dissipation not to exceed 80W at 20°C ambient

Max. shaft end load
5 lbf / 22 N

Max. shaft side load
200 lbf / 890 N

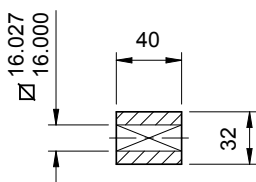
Ambient temperature range
0°C to 60°C

Frictional torque
5 lbf.ins / 0.5 Nm typical

Shaft material
Stainless steel 441S49

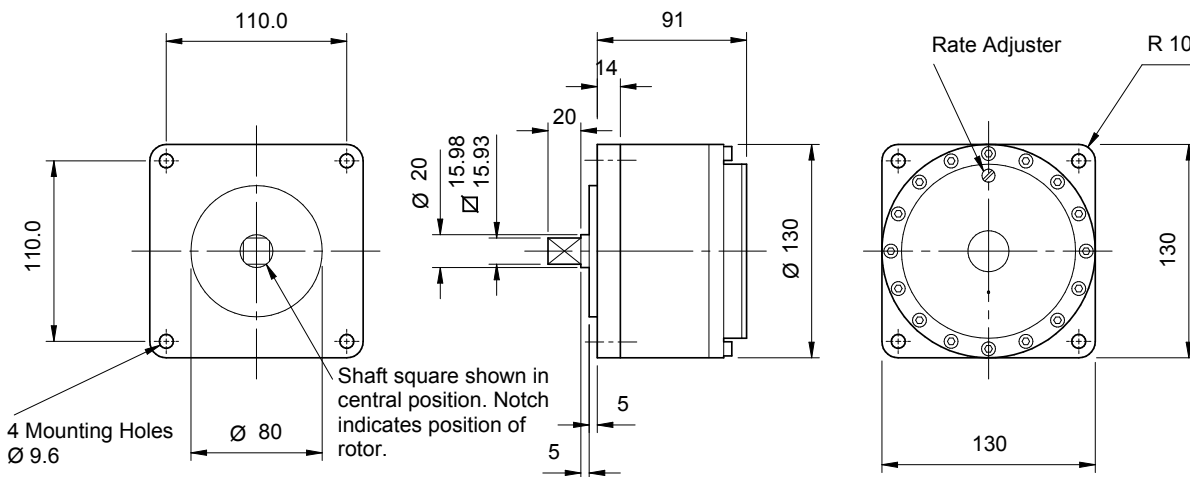
Body material
Zinc alloy Ilzro 16

Weight
13.5 lbs / 6.14 kg



OPTIONAL COUPLING

Dimensions in mm



Rates

An adjuster permits any damping rate to be obtained within one of the following ranges. The range must be specified when ordering the dashpot.

- **LB1:** 35 to 350 lbf.ins/rad/s / 4 to 40 Nm/rad/s
- **LB2:** 71 to 710 lbf.ins/rad/s / 8 to 80 Nm/rad/s
- **LB3:** 150 to 1500 lbf.ins/rad/s / 17 to 170 Nm/rad/s
- **LB4:** 350 to 3500 lbf.ins/rad/s / 40 to 400 Nm/rad/s

With adjuster set to maximum the rate may exceed stated maximum and with adjuster set to minimum the rate may be less than stated minimum.

Options

The following features may be specified for any model:

Differential Rate (FC or FAC)

Gives a large resistance in one direction only and less than 1/10 resistance in the other. Specify free clockwise or free anticlockwise when viewed from shaft end.

Double Damping (DD)

Gives equal resistance in either direction.

Couplings

Steel couplings are available as an option.

Ordering Codes

- LB1, 2, 3 or 4 – DD
- LB1, 2, 3 or 4 – FC or FAC